

# XP40 HD IP series

## Explosion proof PTZ camera station



### Overview

The Oxalis XP40 is an explosion protected PTZ camera station for use in hazardous areas in onshore, offshore, marine and heavy industrial environments.

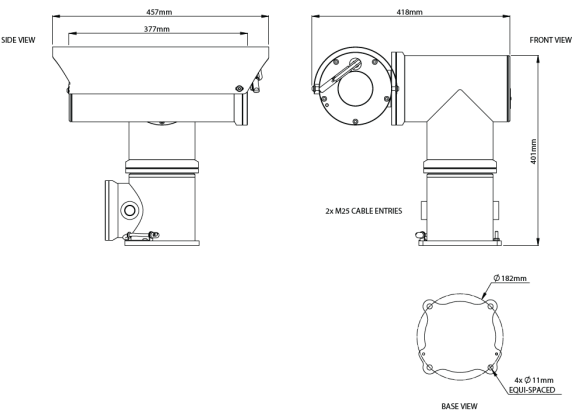
Our camera stations are designed and manufactured for longevity in harsh environments with minimal maintenance

### Features

- ATEX & IECEx certified
- Electro-polished 316L stainless steel finish
- Camera station window in toughened glass
- Wall mounting options (see separate datasheets)
- Supply voltage options (24, 110, 230 VAC, 50/60Hz or 24 VDC)
- Operating temperature from -60°C to +70°C\*
- IP66/67

\*Model dependent



Certifications		General arrangement drawing (all dimensions in mm)	
ATEX	II 2 G Ex db (op pr) IIC T4 Gb -60°C to +70°C II 2 D Ex tb (op pr) IIIC T140°C Db IP6x On Request: T5 -60°C to +65°C, T6 -60°C to +40°C On request: T135 -60°C to +65°C Certificate: ITS16ATEX101021X	 <p>The drawing shows three views of the camera: Side View, Front View, and Base View. Dimensions are provided for each view. Side View shows a width of 457mm and a depth of 377mm. Front View shows a width of 418mm and a height of 401mm. Base View shows a circular base with a diameter of 182mm and four mounting holes spaced 11mm apart.</p>	
IECEX	Ex db (op pr) IIC T4 Gb -60°C to +70°C Ex tb (op pr) IIIC T140°C Db IP6x On Request: T5 -60°C to +65°C, T6 -60°C to +40°C On request: T135 -60°C to +65°C Certificate: IECEX ITS 15.0068X		
INMETRO	Ex db (op pr) IIC T4 Gb -60°C to +70°C Ex tb (op pr) IIIC T140°C Db IP6x On Request: T5 -60°C to +65°C, T6 -60°C to +40°C On request: T135 -60°C to +65°C Certificate: UL-BR 17.0063X		
CCOE	Ex db (op pr) IIC T4 Gb -60°C to +70°C Ex tb (op pr) IIIC T140°C Db IP6x On Request: T5 -60°C to +65°C, T6 -60°C to +40°C On request: T135 -60°C to +65°C Certificate: P529141		

Specifications			
Features		Electrical	
<b>Sun shield</b>	Standard stainless steel 316L mirror finish	<b>Supply voltage options</b>	24, 110, 230 VAC, 50/60Hz or 24 VDC
<b>Integral wiper</b>	Optional (silicone wiper blades that are resistant and do not perish after long exposure to ozone, UV, ice, snow, heat or cold)	<b>Power consumption</b>	80W maximum (143W with low temperature operation)
<b>Integral demister</b>	Standard	<b>Electrical connections</b>	Terminal block for power, data and video specific to camera configuration
<b>Integral washer pump</b>	Not applicable	<b>Cable entry</b>	2 x M25 entries located in the base (1 plugged)
<b>Washer systems</b>	Compatible with Oxalis XW or XWP washer tanks (see datasheets)	<b>Mechanical</b>	
<b>Pan speed (maximum)</b>	45° per second	<b>Body material</b>	Electro-polished 316L stainless steel on all welded assemblies
<b>Tilt speed (maximum)</b>	24° per second	<b>Fixings material</b>	A4 stainless steel
<b>Pre-set positional accuracy</b>	64 presets: positional accuracy±0.1°	<b>Camera station window</b>	Toughened glass
<b>Telemetry receiver</b>	Integral - Pelco D, standard protocol (others to specification)	<b>Mounting options</b>	Pole or wall (see separate datasheets)
<b>Rotation</b>	Continuous pan or 350° rotation (+/- 175° from straight ahead)	<b>Operating temperature</b>	From -60°C to +70°C (model dependent)
<b>IP direct fibre out options</b>	Optional media converter, duplex/simplex singlemode 9/125µm or multimode 50/125µm, 10/100Mb Ethernet, IEEE 802.3	<b>Weight (Kg)</b>	Up to 33 kg depending on configuration
<b>IP over coax</b>	Optional integrated IP Ethernet-over-coax converter (must be used with compatible Rx equipment)	<b>Ingress Protection Rating</b>	IP66/67
Camera options			
32x XNZ-6320 HP IP camera		22x zoom 3MP HD IP camera	
<b>Image sensor</b>	Progressive scan CMOS 1/2.8"	<b>Image sensor</b>	Progressive scan CMOS 1/2.8"
<b>Resolution</b>	Resolution: 1920x1080 @60fps to 320x240	<b>Resolution</b>	2304 x 1296 @ 30fps
<b>Lens</b>	32x optical 32x digital zoom 4.44-142.6 mm F1.6 to F4.4, horizontal angle of view 61.8° - 2.19°	<b>Lens</b>	22x optical zoom 5.2~114.4mm F1.5~F3.8, horizontal angle of view 53.74° - 2.96°
<b>Min. illumination</b>	Colour : 0.05Lux (1/30sec, F1.6, 50IRE), B/W : 0.005Lux (1/30sec, F1.6, 50IRE)	<b>Min. illumination</b>	Colour : 0.002Lux (F1.5, AGC ON), B/W 0.001Lux (F1.5, AGC ON)
<b>Streaming</b>	H.264, H.265 MJPEG dual codec, multiple streaming, VBR/CBR	<b>Streaming</b>	Triple streams in H.264, H.265
<b>Features</b>	Intelligent video analytics, motion detection, day & night (ICR), WDR (150dB), auto focus, auto Iris, AGC, SSDR, ATW, SSNR III, BLC, DIS, Defog	<b>Features</b>	AGC, AE,AWB,TDN,DNR,BLC,EIS,WDR,Defog,OSD,Day & Night Auto Colour/BW (IR-cut with auto switch)
<b>Standards protocols</b>	ONVIF Profile S, TCP/IP, UDP/IP, RTP(UDP), RTP(TCP), RTCP, RTSP, NTP, HTTP, HTTPS, SSL, DHCP, FTP, SMTP, ICMP, IGMP, SNMPv1/v2c/v3(MIB-2), ARP, DNS, DDNS, QoS, PIM-SM, UPnP, Bonjour	<b>Standards protocols</b>	ONVIF Profiles G, S & T, L2TP, IPv4, IGMP, ICMP, ARP, TCP, UDP, DHCP, PPPoE, RTP, RTSP, DNS, DDNS, NTP, FTP, UPnP, HTTP, SNMP, SIP
33x zoom 3MP HD IP camera		22x zoom 5MP HD IP camera	
<b>Image Sensor</b>	Progressive scan CMOS 1/2.8"	<b>Image Sensor</b>	Progressive scan CMOS 1/2.7"
<b>Resolution</b>	2304 x 1296 @ 60fps	<b>Resolution</b>	2880 x 1620 @ 30fps
<b>Lens</b>	33x optical zoom 4.5~148.5mm F1.5~F4.0, horizontal angle of view 62.93° - 3.67°	<b>Lens</b>	22x optical zoom 5.2~114.4mm F1.5~F3.8, horizontal angle of view 55.46° - 3.09°
<b>Min. Illumination</b>	Colour : 0.001Lux (F1.5, AGC ON), B/W 0.0005Lux (F1.5, AGC ON)	<b>Min. Illumination</b>	Colour : 0.003Lux (F1.5, AGC ON), B/W 0.001Lux (F1.5, AGC ON)
<b>Streaming</b>	Five streams in H.264, H.265	<b>Streaming</b>	Triple streams in H.264, H.265
<b>Features</b>	AGC, AE,AWB,TDN,DNR,BLC,EIS,WDR,Defog,OSD,Day & Night Auto Colour/BW (IR-cut with auto switch)	<b>Features</b>	AGC, AE,AWB,TDN,DNR,BLC,EIS,WDR,Defog,OSD,Day & Night Auto Colour/BW (IR-cut with auto switch)
<b>Standards Protocols</b>	ONVIF Profiles G, S & T, L2TP, IPv4, IGMP, ICMP, ARP, TCP, UDP, DHCP, PPPoE, RTP, RTSP, DNS, DDNS, NTP, FTP, UPnP, HTTP, SNMP, SIP	<b>Standards Protocols</b>	ONVIF Profiles G, S & T, L2TP, IPv4, IGMP, ICMP, ARP, TCP, UDP, DHCP, PPPoE, RTP, RTSP, DNS, DDNS, NTP, FTP, UPnP, HTTP, SNMP, SIP

# Ordering requirements

The following code is designed to help in selection of the correct unit. Build up the reference number by inserting the code for each component into the appropriate box

XP40														
<b>Housing type</b> Visual camera housing	<b>Code</b> BV													
<b>Wiper options</b> Integral wiper with switched 24VAC for external washer pump No wiper	<b>Code</b> E N													
<b>Video type</b> HD IP system	<b>Code</b> I													
<b>Day/night module</b> 32x zoom 2MP HD IP camera 22x zoom 3MP HD IP camera 33x zoom 3MP HD IP camera 22x zoom 5MP HD IP camera	<b>Code</b> P U V W													
<b>Thermal core module</b> No thermal core	<b>Code</b> N													
<b>Thermal core lens</b> No thermal imaging lens	<b>Code</b> N													
<b>Video system</b> IP	<b>Code</b> I													
<b>Supply voltage</b> 24 VAC ±10% 50/60 Hz 110 VAC ±10% 50/60 Hz 230 VAC ±10% 50/60 Hz 24 VDC ±10% (-ve Earthed) 24 VDC +/- 10% (-ve isolated from Earth) Special - price on application	<b>Code</b> 1 2 3 4 9 S													
<b>Camera rotation</b> Continuous rotation Pan rotation restricted to +/- 175°	<b>Code</b> 1 2													
<b>Cable Tail Length</b> No cable tail 3 metre 5 metre 7 metre 10 metre 15 metre Specify length	<b>Code</b> 00 03 05 07 10 15 *S													
<b>Transmission type</b> Standard electrical Simplex singlemode 9/125µm ethernet Simplex multimode 50/125µm ethernet IP over coax Duplex singlemode 9/125µm Duplex multimode 50/125µm	<b>Code</b> 0 3 4 5 6 7													
<b>Temperature type</b> T4, -20°C to +70°C* T4, -40°C to +70°C* T4, -60°C to +40°C T5, -20°C to +65°C* T5, -40°C to +65°C* T5, -60°C to +40°C T6, -20°C to +40°C* T6, -40°C to +40°C* T6, -60°C to +40°C*	<b>Code</b> A B 3 C D 6 7 8 9													
*Subject to configuration restrictions														
<b>Certification</b> ATEX IECEX INMETRO CCOE	<b>Code</b> A I M D													
<b>Protocol requirements</b> Pelco D protocol, baud rate 2400bps Special - price on application	<b>Code</b> D S													

# XP40 dual imager IP series

Explosion proof, PTZ  
camera station



## Overview

The Oxalis XP40 platform is an explosion protected PTZ camera station for use in hazardous areas in onshore, offshore, marine and heavy industrial environments.

The camera stations are designed for longevity in harsh environments with minimal maintenance.

This datasheet cover the dual imaging configuration for continued vision in ultra-low light or harsh environmental conditions such as fog or smoke.

## Features

- ATEX and IECEx certified
  - Compatible with Oxalis XW or XWP washer tanks (see separate datasheets)
  - Electro-polished 316L stainless steel on all welded assemblies
  - Wall mounting options (see separate datasheets)
  - Supply voltage options (24, 110, 230 VAC (50/60Hz) or 24 VDC)
  - Operating temperature -60°C to +70°C
  - IP66/67
- \*Model dependent

**ATEX IECEx***Powering Business Worldwide*

Eaton  
Unit B, Sutton Parkway  
Oddicroft Lane  
Sutton in Ashfield  
United Kingdom  
NG17 5FB

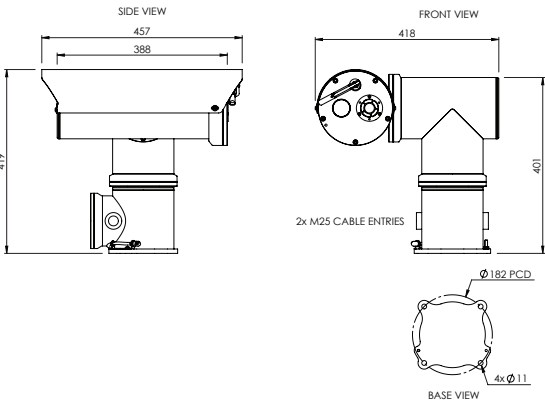
T: +44 (0) 1623 444 400  
[www.eaton.com/cctv](http://www.eaton.com/cctv)  
[MEDCSales@Eaton.com](mailto:MEDCSales@Eaton.com)

© 2025 Eaton  
All Rights Reserved  
Printed in UK  
Publication  
No.DSOX0118/E  
February 2025

Eaton is a registered trademark.

All other trademarks are property of their respective owners.

All specifications, dimensions, weights and tolerances are nominal (typical) and Eaton reserve the right to vary all data without prior notice.  
No liability is accepted for any consequence of use.

Certifications		General arrangement drawing (all dimensions in mm)	
ATEX	II 2 G Ex db (op pr) IIC T4 Gb -60°C to +70°C II 2 D Ex tb (op pr) IIIC T140°C Db IP6x On Request: T5 -60°C to +65°C, T6 -60°C to +40°C On request: T135 -60°C to +65°C Certificate: ITS16ATEX101021X		
IECEX	Ex db (op pr) IIC T4 Gb -60°C to +70°C Ex tb (op pr) IIIC T140°C Db IP6x On Request: T5 -60°C to +65°C, T6 -60°C to +40°C On request: T135 -60°C to +65°C Certificate: IECEX ITS 15.0068X		
INMETRO	Ex db (op pr) IIC T4 Gb -60°C to +70°C Ex tb (op pr) IIIC T140°C Db IP6x On Request: T5 -60°C to +65°C, T6 -60°C to +40°C On request: T135 -60°C to +65°C Certificate: ULBR 17.0063X		
CCOE	Ex db (op pr) IIC T4 Gb -60°C to +70°C Ex tb (op pr) IIIC T140°C Db IP6x On Request: T5 -60°C to +65°C, T6 -60°C to +40°C On request: T135 -60°C to +65°C Certificate: P529141		

Specifications			
Features		Electrical	
Sun shield	Standard stainless steel 316L mirror finish	Supply voltage options	24, 110, 230 VAC (50/60Hz) or 24 VDC
Integral wiper dual windows	Optional (silicone wiper blades that are resistant and do not perish after long exposure to ozone, UV, ice, snow, heat or cold)	Power consumption	85W maximum (143W with low temperature operation)
Integral demister	Standard	Electrical connections	Terminal block for power, data and video specific to camera configuration
Integral washer pump	Optional	Cable entry	2 x M25 entries located in the base (1 plugged)
Washer systems	Compatible with Oxalis XW or XWP washer tanks (see separate datasheets)	Mechanical	
Pan speed (maximum)	45° per second	Body material	Electro-polished 316L stainless steel on all welded assemblies
Tilt speed (maximum)	24° per second	Fixings material	A4 stainless steel
Pre-set positional accuracy	64 presets: positional accuracy±0.1°	Camera station window	Toughened glass / Internal AR and external carbon coated germanium with protective grill
Telemetry receiver	Integral - Pelco D	Mounting options	Pole or wall (see separate datasheets)
Rotation	Continuous pan or 350° rotation (+/- 175° from straight ahead)	Operating temperature	From -60°C to +70°C (model dependent)
IP direct fibre out options	Optional media converter duplex/simplex singlemode 9/125um or multi-mode 50/125um, 10/100Mb Ethernet, IEEE 802.3	Weight (Kg)	Up to 33 Kg depending on configuration
IP over Coax	Optional intergrated IP ethernet over coax converter (must be used with compatible Rx equipment)	Ingress protection rating	IP66/67
Camera options			
33x zoom 3MP HD IP camera			
Image sensor	Progressive scan CMOS 1/2.8"		
Resolution	2304 x 1296 @ 60fps		
Lens	33x optical zoom 4.5~148.5mm F1.5~F4.0, horizontal angle of view 62.93° - 3.67°		
Min. illumination	Colour : 0.001Lux (F1.5, AGC ON), B/W 0.0005Lux (F1.5, AGC ON)		
Streaming	Five streams in H.264, H.265		
Features	AGC,AE,AWB,TDN,DNR,BLC,EIS,WDR,Defog,OSD,Day & Night Auto Colour/BW (IR-cut with auto switch)		
Standards protocols	L2TP, IPv4, IGMP, ICMP, ARP, TCP, UDP, DHCP, PPPoE, RTP, RTSP, DNS, DDNS, NTP, FTP, UPnP, HTTP, SNMP, SIP.		
Thermal camera options			
Image sensor	Option A Uncooled Mlcro bolometer effective pixels 400(H)x300(V), pizel size:17 um, Spectral range: 8-14 um. Colour palletes 18  Option B Uncooled Mlcro bolometer effective pixels 640(H)x512(V), pizel size:12 um, Spectral range: 8-14 um. Colour palletes 18  Option D Uncooled Mlcro bolometer effective pixels 400(H)x300(V), pizel size:17 um, Spectral range: 8-14 um. Colour palletes 18 . Temperature Alarm -20°C to +550°C  Option E Uncooled Mlcro bolometer effective pixels 640(H)x512(V), pizel size:12 um, Spectral range: 8-14 um. Colour palletes 18 . Temperature Alarm -20°C to +550°C		
Lens - option A & D sensor	13mm Lens, Angle of View H:30.2°, V:22.6°. Effective Detection Distance, Man (1.8m*0.5m):382m. Vehicle (4m*1.4m):850m  25mm Lens, Angle of View H:15.5°, V:11.6°. Effective Detection Distance, Man (1.8m*0.5m):735m. Vehicle (4m*1.4m):1634m  35mm Lens, Angle of View H:11.1°, V:8.3°. Effective Detection Distance, Man (1.8m*0.5m):1030m. Vehicle (4m*1.4m):2288m		
Lens - option B & E sensor	13mm Lens, Angle of View H:37°, V:28°. Effective Detection Distance, Man (1.8m*0.5m):541m. Vehicle (2.3m*2.3m):1666m  25mm Lens, Angle of View H:17.6°, V:14.1°. Effective Detection Distance, Man (1.8m*0.5m):1041m. Vehicle (4m*1.4m):3205m  35mm Lens, Angle of View H:12.5°, V:10°. Effective Detection Distance, Man (1.8m*0.5m):1458m. Vehicle (4m*1.4m):4487m		
Streaming	H.264/MJPEG. Main framerate Option A sensor 1280 x 1024/720P/400x300 @25/30fps. Option 4 sensor 1280 x 1024/720P @1~25/30fps. Bit Rate control CBR/VBR. Motion detection OFF/ON (4 zone, rectangle). Region of interest Off/On (4 Zone). Privacy masking		
Features	Brightness/Sharpness/ROI/AGC/FFC/3D DNR, Motion detection, Colour palettes 14/18, Tripwire, Intrusion, Object abandon/missing, Fire detection & alarm		
Standard protocols	IPv4/IPv6, HTTP, HTTPS, SSL, TCP/IP, UDP, UPnP, ICMP, IGMP, SNMP, RTSP, RTP, SMTP, NTP, DHCP, DNS, PPPOE, DDNS, FTP, IP Filter, QoS, Bonjour, 802.1x. ONVIF Profile S & G, PSIA, CGI		

# Ordering requirements

The following code is designed to help in selection of the correct unit. Build up the reference number by inserting the code for each component into the appropriate box

XP40														
------	--	--	--	--	--	--	--	--	--	--	--	--	--	--

**Housing type**  
Visual camera housing

**Code**  
BD

**Wiper options**  
Integral wiper with switched 24VAC for external washer pump  
No wiper

**Code**  
E  
N

**Video type**  
IP

**Code**  
I

**Day/night module**  
33x zoom 3MP HD IP camera

**Code**  
V

**Thermal core module**  
400 x 300 uncooled Vox  
640 x 512 uncooled Vox  
400 x 300 uncooled Vox Temp Measurement  
640 x 512 uncooled Vox Temp Measurement

**Code**  
A  
B  
D  
E

**Thermal core lens**  
13mm lens core A&D  
25mm lens core A&D  
35mm lens core A&D  
13mm lens core B&E  
25mm lens core B&E  
35mm lens core B&E

**Code**  
7  
2  
3  
9  
B  
D

**Video system**  
IP

**Code**  
I

**Supply voltage**  
24 VAC ±10% 50/60 Hz  
110 VAC ±10% 50/60 Hz  
230 VAC ±10% 50/60 Hz  
24 VDC ±10%  
Special - price on application

**Code**  
1  
2  
3  
4  
S

**Camera rotation**  
Continuous rotation  
Pan rotation restricted to +/- 175°

**Code**  
1  
2

**Protocol requirements**  
Pelco D protocol, baud rate 2400bps  
Special - price on application

**Code**  
D  
S

**Cable Tail Length**  
No cable tail  
3 metre  
5 metre  
7 metre  
10 metre  
15 metre  
Specify length

**Code**  
00  
03  
05  
07  
10  
15  
\*S

**Transmission type**  
Standard electrical  
Simplex Singlmode 9/125µm ethernet  
Simplex Multimode 50/125µm ethernet  
IP over Coax  
Duplex Singlmode 9/125µm  
Duplex Singlmode 50/125µm  
Customer Specific transmission device

**Code**  
0  
3  
4  
5  
6  
7  
C

**Temperature type**  
T4, -20°C to +70°C  
T4, -40°C to +70°C  
T4, -60°C to +40°C

**Code**  
A  
B  
3

**Certification**  
ATEX  
IECEX  
INMETRO  
CCOE

**Code**  
A  
I  
M  
D

# XP40 HD IR IP series

Explosion proof, PTZ  
with illuminator camera  
station



## Overview

The Oxalis XP40 IR is an explosion protected PTZ camera station with integral SMART illumination, designed for use in hazardous areas in onshore, offshore, marine and heavy industrial environments. The camera stations are designed for longevity in harsh environments with minimal maintenance. The IR illuminator's light intensity automatically adjusts to suit the camera zoom and is capable of up to a range of 300m.

## Features

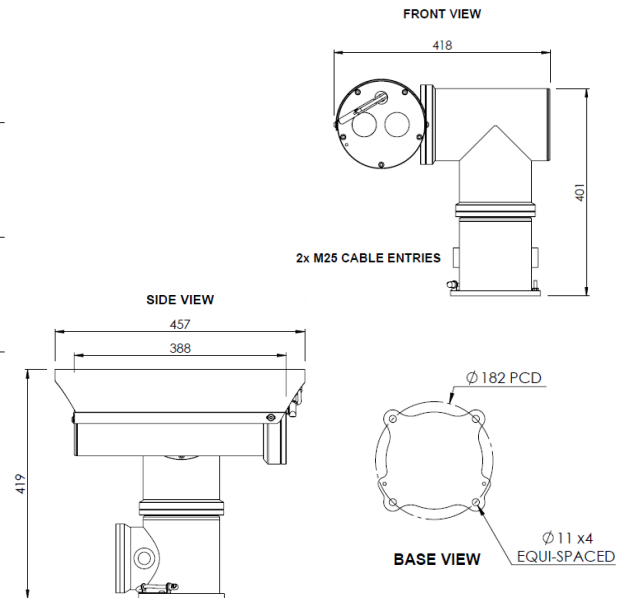
- ATEX, IECEx certified
- Electro-polished 316L stainless steel on all welded assemblies
- Camera station window in toughened glass
- Wall mounting options (see separate datasheet)
- Supply voltage options (24, 110, 230 VAC (50/60Hz) or 24 VDC)
- Operating temperature from -60°C to +70°C\*
- IP66/67

\*Model dependent



Certifications			
ATEX	II 2 G Ex db (op pr) IIC T4 Gb -60°C to +70°C	IECEx	Ex db (op pr) IIC T4 Gb -60°C to +70°C
	II 2 D Ex tb (op pr) IIIC T140°C Db IP6x		Ex tb (op pr) IIIC T140°C Db IP6x
	On Request: T5 -60°C to +65°C, T6 -60°C to +40°C		On Request: T5 -60°C to +65°C, T6 -60°C to +40°C
	On request: T135 -60°C to +65°C		On request: T135 -60°C to +65°C
	Certificate: ITS16ATEX101021X		Certificate: IECEx ITS 15.0068X
INMETRO	Ex db (op pr) IIC T4 Gb -60°C to +70°C	CCOE	Ex db (op pr) IIC T4 Gb -60°C to +70°C
	Ex tb (op pr) IIIC T140°C Db IP6x		Ex tb (op pr) IIIC T140°C Db IP6x
	On Request: T5 -60°C to +65°C, T6 -60°C to +40°C		On Request: T5 -60°C to +65°C, T6 -60°C to +40°C
	On request: T135 -60°C to +65°C		On request: T135 -60°C to +65°C
	Certificate: UL-BR 170063X		Certificate: P400546/1
CCOE	Ex db (op pr) IIC T4 Gb -60°C to +70°C		
	Ex tb (op pr) IIIC T140°C Db IP6x		
	On Request: T5 -60°C to +65°C, T6 -60°C to +40°C		
	On request: T135 -60°C to +65°C		
	Certificate: P529141		

## General arrangement drawing (all dimensions in mm)



## Specifications

Features		Electrical	
Sun shield	Standard stainless steel 316L mirror finish	Supply voltage options	24 VAC, 110 or 230 VAC, 50/60Hz or 24 VDC
Integral wiper	Optional (Silicone wiper blades that are resistant and do not perish after long exposure to ozone, UV, ice, snow, heat or cold)	Power consumption	92W maximum (155W with low temperature operation)
Integral demister	Standard	Electrical connections	Terminal block for power and data specific to camera configuration
Washer systems	Compatible with Oxalis XWP washers with 24 VAC/24 VDC solenoid valve (depending on supply voltage selected for camera)	Cable entry	2 x M25 entries located in the base (1 plugged)
Pan speed (maximum)	45° per second	Mechanical	
Tilt speed (maximum)	24° per second	Body material	Electro-polished 316L stainless steel on all welded assemblies
Tilt	180° (+/- 90° from straight ahead)	Fixings material	A4 stainless steel
Pre-set positional accuracy	64 presets: positional accuracy±0.1°	Camera station window	Toughened glass
Telemetry receiver	Integral - Pelco D	Mounting options	Wall (see separate datasheet)
Rotation	Continuous pan or 350° rotation (+/- 175° from straight ahead)	Operating temperature	From -60°C to +70°C (model dependent), 95% Relative Humidity, non-condensing
Integral illumination	IR Laser Illuminator, internally powered from camera station, range up to 300m, 860nm wavelength. Auto switching from ambient light sensor or auxiliary command.	Weight (Kg)	Up to 33 Kg depending on configuration
IP direct fibre out	Optional media converter, simplex singlemode 9/125µm or multimode 50/125µm, 10/100Mb ethernet, IEEE 802.3,	Ingress protection rating	IP66/67
IP over coax	Optional integrated IP ethernet-over-coax converter (must be used with compatible Rx equipment)		

Camera options	
33x zoom 3MP HD IP Camera	
Image sensor	Progressive scan CMOS 1/2.8"
Resolution	2304 x 1296 @ 60fps
Lens	33x optical zoom 4.5~148.5mm F1.5~F4.0, horizontal angle of view 62.93° - 3.67°
Min. illumination	Colour : 0.001Lux (F1.5, AGC ON), B/W 0.0005Lux (F1.5, AGC ON)
Streaming	Five streams in H.264, H.265
Features	AGC, AE,AWB,TDN,DNR,BLC,EIS,WDR,Defog,OSD,Day & Night Auto Colour/BW (IR-cut with auto switch)
Standards protocols	L2TP, IPv4, IGMP, ICMP, ARP, TCP, UDP, DHCP, PPPoE, RTP, RTSP, DNS, DDNS, NTP, FTP, UPnP, HTTP, SNMP, SIP



# Ordering requirements

The following code is designed to help in selection of the correct unit. Build up the reference number by inserting the code for each component into the appropriate box

XP40

Housing type

Visual camera housing

Code

BV

Wiper options

Integral wiper with switched 24VAC for external washer pump

No wiper

Code

E

N

Video type

HD IP system

Code

I

Day/night module

33x zoom 3MP HD IP camera

Code

V

IR Illuminator

300m

Code

S

Thermal core lens

No thermal imaging lens

Code

N

Video system

IP

Code

I

Supply voltage

24 VAC ±10% 50/60 Hz

110 VAC ±10% 50/60 Hz

230 VAC ±10% 50/60 Hz

24 VDC ±10% (-ve Earthed)

24VDC +/- 10% (-ve isolated from Earth)

Special price on application

Code

1

2

3

4

9

S

Cable Tail Length

No cable tail

3 metre

5 metre

7 metre

10 metre

15 metre

Specify length

Code

00

03

05

07

10

15

\*S

Transmission type

Standard electrical

Simplex singlemode

9/125µm ethernet

Simplex multimode

50/125µm ethernet

IP over coax

Customer specific transmission device

Code

0

3

4

5

C

Temperature type

T4, -20°C to +70°C

T4, -40°C to +70°C

T4, -60°C to +40°C

Code

A

B

3

Certification

ATEX

IECEX

INMETRO

CCOE

Code

A

I

M

D

Protocol requirements

Pelco D protocol, baud rate 2400bps

Special - price on application

Code

D

S

Camera rotation

Continuous rotation

Pan rotation restricted to +/- 175°

Code

1

2

DSOX0122/B 06/24

# SP40 dual imager IP series

## PTZ camera station



## Overview

The Oxalis SP40 is a PTZ camera station, for use in designated safe areas in onshore, offshore, marine and heavy industrial environments.

The camera stations are designed for longevity in harsh environments with minimal maintenance.

## Features

- Electro-polished 316L stainless steel on all welded assemblies
- Compatible with Oxalis SW washer tanks (see separate datasheets)
- Pole or wall mounting options (see separate datasheets)
- Supply voltage options (24 VAC, 110 or 230 VAC, 50/60Hz or 24 VDC)
- Operating temperature from -60°C to +70°C\*
- IP66/67

\*Model dependent



Powering Business Worldwide

Eaton  
Unit B, Sutton Parkway  
Oddicraft Lane  
Sutton in Ashfield  
United Kingdom  
NG17 5FB

T: +44 (0) 1623 444 400  
[www.eaton.com/cctv](http://www.eaton.com/cctv)  
[MEDCSales@Eaton.com](mailto:MEDCSales@Eaton.com)

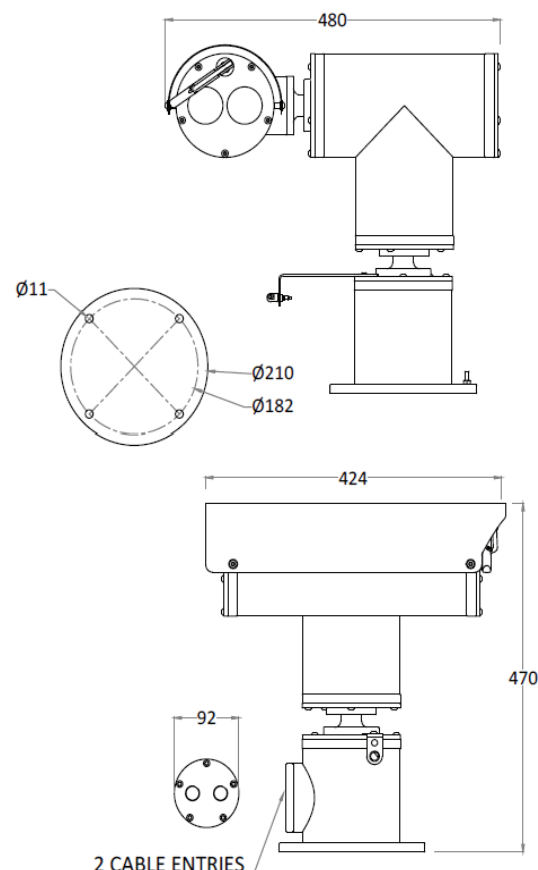
© 2025 Eaton  
All Rights Reserved  
Printed in UK  
Publication  
No.DSOX0129.A  
April 2025

Eaton is a registered trademark.

All other trademarks are property of their respective owners.

Specification	
<b>Features</b>	
<b>Sun shield</b>	Standard stainless steel 316L mirror finish
<b>Integral wiper</b>	Optional (silicone wiper blades that are resistant and do not perish after long exposure to ozone, UV, ice, snow, heat or cold)
<b>Integral demister</b>	Standard
<b>Washer systems</b>	Compatible with Oxalis SW Washer tanks (see separate datasheets)
<b>Pan speed (maximum)</b>	45° per second
<b>Tilt speed (maximum)</b>	24° per second
<b>Pre-set positional accuracy</b>	64 presets: positional accuracy $\pm 0.1^\circ$
<b>Telemetry receiver</b>	Integral - pelco D
<b>Rotation</b>	Continuous pan or 350° rotation (+/- 175° from straight ahead)
<b>IP direct fibre out</b>	Optional media converter, simplex singlemode 9/125 or multimode 50/125µm, 10/100Mb ethernet, IEEE 802.3
<b>Ingress protection rating</b>	IP66/67
<b>Electrical</b>	
<b>Supply voltage options</b>	24 VAC, 110, 230 VAC, 50/60Hz or 24VDC
<b>Power consumption</b>	85W maximum (143W with low temperature operation)
<b>Electrical connections</b>	Terminal block for power, data and video specific to camera configuration
<b>Cable entry</b>	Two M20 or 1x ½ and 1 x ¾ npt entries located in base
<b>Mechanical</b>	
<b>Body material</b>	Electro-polished 316L stainless steel on all welded assemblies
<b>Fixings material</b>	A4 stainless steel
<b>Camera station window</b>	Toughened glass & internal AR and external carbon coated germanium Ø50 mm
<b>Mounting options</b>	Pole or wall (see separate datasheets)
<b>Operating temperature</b>	From -60°C to +70°C (model dependent)
<b>Weight</b>	Up to 34 Kg depending on configuration

General arrangement drawing (all dimensions in mm)



22x zoom 3MP HD IP camera		33x zoom 3MP HD IP camera	
<b>Image sensor</b>	Progressive scan CMOS 1/2.8"	<b>Image sensor</b>	Progressive scan CMOS 1/2.8"
<b>Resolution</b>	2304 x 1296 @ 30fps	<b>Resolution</b>	2304 x 1296 @ 60fps
<b>Lens</b>	22x optical zoom 5.2~114.4mm F1.5~F3.8, horizontal angle of view 53.74° - 2.96°	<b>Lens</b>	33x optical zoom 4.5~148.5mm F1.5~F4.0, horizontal angle of view 62.93° - 3.67°
<b>Min. illumination</b>	Colour : 0.002Lux (F1.5, AGC ON), B/W 0.001Lux (F1.5, AGC ON)	<b>Min. illumination</b>	Colour : 0.001Lux (F1.5, AGC ON), B/W 0.0005Lux (F1.5, AGC ON)
<b>Streaming</b>	Triple streams in H.264, H.265	<b>Streaming</b>	Five streams in H.264, H.265
<b>Features</b>	AGC, AE,AWB,TDN,DNR,BLC,EIS,WDR,Defog,OSD,Day & Night Auto Colour/BW (IR-cut with auto switch)	<b>Features</b>	AGC, AE,AWB,TDN,DNR,BLC,EIS,WDR,Defog,OSD,Day & Night Auto Colour/BW (IR-cut with auto switch)
<b>Standards protocols</b>	L2TP, IPv4, IGMP, ICMP, ARP, TCP, UDP, DHCP, PPPoE, RTP, RTSP, DNS, DDNS, NTP, FTP, UPnP, HTTP, SNMP, SIP	<b>Standards protocols</b>	L2TP, IPv4, IGMP, ICMP, ARP, TCP, UDP, DHCP, PPPoE, RTP, RTSP, DNS, DDNS, NTP, FTP, UPnP, HTTP, SNMP, SIP
<b>Thermal camera options</b>			
<b>Image sensor</b>	Option A Uncooled Mlcro bolometer effective pixels 400(H)x300(V), pizel size:17 um, Spectral range: 8-14 um. Colour palletes 18 Option B Uncooled Mlcro bolometer effective pixels 640(H)x512(V), pizel size:12 um, Spectral range: 8-14 um. Colour palletes 18 Option D Uncooled Mlcro bolometer effective pixels 400(H)x300(V), pizel size:17 um, Spectral range: 8-14 um. Colour palletes 18 . Temperature Alarm -20°C to +550°C Option E Uncooled Mlcro bolometer effective pixels 640(H)x512(V), pizel size:12 um, Spectral range: 8-14 um. Colour palletes 18 . Temperature Alarm -20°C to +550°C		
<b>Lens - option A &amp; D sensor</b>	13mm Lens, Angle of View H:30.2°, V:22.6°. Effective Detection Distance, Man (1.8m*0.5m):382m. Vehicle (4m*1.4m):850m 25mm Lens, Angle of View H:15.5°, V:11.6°. Effective Detection Distance, Man (1.8m*0.5m):735m. Vehicle (4m*1.4m):1634m 35mm Lens, Angle of View H:11.1°, V:8.3°. Effective Detection Distance, Man (1.8m*0.5m):1030m. Vehicle (4m*1.4m):2288m		
<b>Lens - option B &amp; E sensor</b>	13mm Lens, Angle of View H:37°, V:28°. Effective Detection Distance, Man (1.8m*0.5m):541m. Vehicle (2.3m*2.3m):1666m 25mm Lens, Angle of View H:17.6°, V:14.1°. Effective Detection Distance, Man (1.8m*0.5m):1041m. Vehicle (4m*1.4m):3205m 35mm Lens, Angle of View H:12.5°, V:10°. Effective Detection Distance, Man (1.8m*0.5m):1458m. Vehicle (4m*1.4m):4487m		
<b>Streaming</b>	H.264/MJPEG. Main framerate Option A sensor 1280 x 1024/720P/400x300 @25/30fps. Option 4 sensor 1280 x 1024/720P @1~25/30fps. Bit Rate control CBR/VBR. Motion detection OFF/ON (4 zone, rectangle). Region of interest Off/On (4 Zone). Privacy masking		
<b>Features</b>	Brightness/Sharpness/ROI/AGC/FFC/3D DNR, Motion detection, Colour palletes 14/18, Tripwire, Intrusion, Object abandon/missing, Fire detection & alarm		
<b>Standard protocols</b>	IPv4/IPv6, HTTP, HTTPS, SSL, TCP/IP, UDP, UPnP, ICMP, IGMP, SNMP, RTSP, RTP, SMTP, NTP, DHCP, DNS, PPPoE, DDNS, FTP, IP Filter, QoS, Bonjour, 802.1x. ONVIF Profile S & G, PSIA, CGI		

# Ordering requirements

The following code is designed to help in selection of the correct unit. Build up the reference number by inserting the code for each component into the appropriate box

SP40

Housing type

Dual imaging housing

Code

D

Wiper options

Integral wiper with switched 24VAC for external washer pump  
No wiper

Code

E  
N

Video type

IP

Code

I

Day/night module

22x zoom 3MP HD IP camera  
33x zoom 3MP HD IP camera

Code

U  
V

Thermal core module

400 x 300 uncooled Vox  
640 x 512 uncooled Vox  
400 x 300 uncooled Vox Temp Measurement  
640 x 512 uncooled Vox Temp Measurement

Code

A  
B  
D  
E

Thermal core lens

13mm lens core A&D  
25mm lens core A&D  
35mm lens core A&D  
13mm lens core B&E  
25mm lens core B&E  
35mm lens core B&E

Code

7  
2  
3  
9  
B  
D

Video system

IP

Code

I

Transmission type

Standard electrical  
Simplex singlemode  
9/125µm ethernet  
Simplex multimode  
50/125µm ethernet  
IP over coax  
Duplex Singlemode  
9/125µm  
Duplex Singlemode  
50/125µm  
Customer specific transmission device

Code

0  
3  
4  
5  
6  
7  
S

Temperature type

-20°C to +70°C\*  
-40°C to +70°C\*  
-60°C to +40°C

Code

A  
B  
3

Certification

No Ex certification required

Code

N

Protocol requirements

Pelco D protocol, baud rate 2400bps

Code

D

Camera rotation

Continuous rotation  
Pan rotation restricted to +/- 175°

Code

1  
2

Supply voltage

24 VAC ±10% 50/60 Hz  
110 VAC ±10% 50/60 Hz  
230 VAC ±10% 50/60 Hz  
Special - price on application  
24 VDC +/-10% -ve earthed  
24 VDC +/-10% -ve isolated from earth

Code

1  
2  
3  
S  
4  
9

\*Subject to configuration restrictions